

## GN H10 Bow Shackle- Safety Pin

---

### Product information

We deliver a quality GN H10 Bow Shackle- Safety Pin in forged alloy steel [... Read more](#)

---



**Material:** Forged alloy steel quenched and tempered.

**Marking:** According to standard

**Temperature range:** -40°C up to 200°C

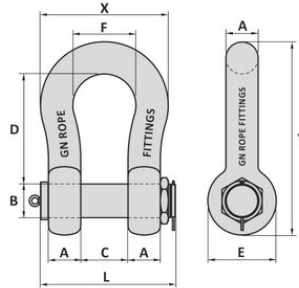
**Finish:** Painted

**Standard:** EN 10204

**Safety factor:** 5:1

## GN H10 Bow Shackle- Safety Pin

### Blueprint



### Technical data

Part code	WLL ton	A mm	B mm	C mm	D, mm	E mm	F mm	L mm	X mm mm	Ymm mm	Weight kg
420112000300	120	89	95	150	380	200	238	420	416	617	110
420115000300	150	102	108	170	400	230	275	475	479	671	160
420120000300	200	120	125	180	500	260	290	520	530	813	235
420125000300	250	125	140	205	540	260	305	560	555	865	285
420130000300	300	130	150	205	600	305	305	570	565	958	340
420140000300	400	165	175	230	680	350	325	665	655	1,108	595
420150000300	500	180	185	255	700	370	350	720	710	1,158	685
420160000300	600	195	205	285	700	405	375	815	765	1,200	880
420170000300	700	205	217	310	700	435	400	860	810	1,231	980
420180000300	800	210	217	310	700	435	400	870	820	1,236	1,100
420190000300	900	220	230	330	700	465	420	910	860	1,268	1,280
420110000301	1,000	230	240	350	750	480	420	950	880	1,290	1,460
420112500301	1,250	278	270	370	780	590	450	1,105	1,010	1,490	2,320
420115000301	1,500	280	290	370	800	610	450	1,105	1,010	1,530	2,450
420117500301	1,750	300	330	430	950	660	540	1,230	1,140	1,745	3,280
420120000301	2,000	320	360	460	1,050	680	560	1,300	1,200	1,890	3,920