

Connecting Link Crosby A-1337



Product information

LOK-A-LOY Connecting Link

Features:

- Suitable for use with both Grade 80 and Grade 100 chain.
- Individually Proof Tested at 2-1/2 times Working Load Limit with certification.
- Locking system that provides for simple assembly and disassembly - no special tools needed.
- 25% stronger than Grade 80.

Material: Forged Alloy Steel - Quenched and Tempered

Marking: Code and grade.

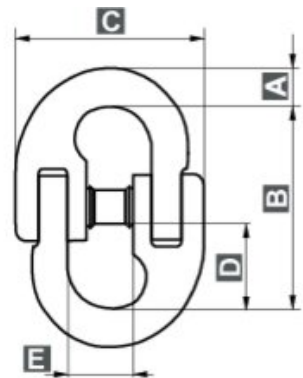
Finish: Painted.

Safety factor: 4:1

Grade: 10

Part code	Chain diameter mm	WLL ton	A mm	B mm	C mm	D, mm	E mm	F mm	Weight kg
402200200060	7	2	9.7	49.3	50.8	20.3	17.3	13.5	0.13
402200250060	8	2.6	9.4	59.9	54.1	25.1	18.3	15	0.19
402200400060	10	4	13	67.3	64.8	27.7	23.1	18.5	0.35
402200680060	13	6.8	17.3	87.9	86.1	36.8	28.7	22.6	0.73
402201020060	16	10.3	19.8	108	101.6	45	34	30.5	1.41
402201600060	20	16	25.7	130.6	134.6	54.6	41.7	39.6	2.9
402201940060	22	19.4	27.7	138.7	146.8	57.7	50	39.4	3.56
402202710060	26	27.1	31.5	150.9	165.1	61.2	56.1	47.8	5.01
402204100060	32	41	39.6	188.7	193	78	65.3	56.4	9.53

Blueprint



F
Mínimo diámetro
requerido para pasar el
ojo durante el montaje.