

Weld-on Lifting Point TAPS-E

Product information



The JDT ENORM TAPS-E is a weld-on attachment point designed for lifting and lashing applications in industrial environments. It provides a permanent anchoring solution for steel structures, lifting beams, machinery, and fabricated assemblies where defined load attachment points are required.

The compact welded design supports reliable load alignment during lifting operations.

Best used for:

- Permanent lifting points on welded steel constructions
- Industrial lifting and lashing applications with defined attachment locations

Product benefits:

- Weld-on attachment point for permanent integrated lifting locations
- Suitable for lifting and lashing applications in industrial environments
- 180° swivel shackle supports alignment with load direction
- Compact forged construction helps reduce installation space requirements
- Available in WLL capacities from 1.4 t to 26.5 t
- Optional RFID chip supports inspection traceability and asset identification
- Welding specifications available for qualified installation procedures

... [Read more](#)

Marking: According to standard, CE-marked, UKCA-marked

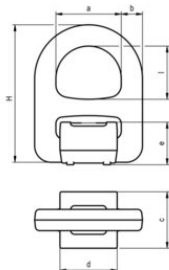
Temperature range: -20°C up to +400°C

Standard: EN 1677-1

Safety factor: 4:1

Weld-on Lifting Point TAPS-E

Blueprint



Technical data

Part code	Code	WLL ton	a mm	b mm	c mm	d mm	e mm	l mm	H mm	Weight kg
4215382901000	TAPS-E 1.4	1.4	38	13	34	34	27	40	91	0.43
4215382902000	TAPS-E 2.5	2.5	40	14	34	34	27	40	91	0.47
42150382904000	TAPS-E 4	4	56	22	46	49	34	52	123	1.24
4215382906000	TAPS-E 6.7	6.7	67	22	55	59	41	63	145	1.96
42150382910000	TAPS-E 10	10	80	26	69	70	52	65	168	3.51
42150382912000	TAPS-E 12.5	12.5	90	28	74	80	56	80	189	4.51
42150382916000	TAPS-E 16	16	100	30	80	90	59	90	205	5.74
42150382919000	TAPS-E 19	19	100	32	94	90	66	90	220	6.94
42150382926000	TAPS-E 26.5	26.5	170	52	130	140	103	175	380	28.7