

## Lifting Point Gunnebo LPE

---

### Product information



Patented lifting point featuring an optimized eye design for safe and efficient side loading. Quick and easy installation allows for hand-tightening or secure tightening using a spanner or standard wrench.

#### Features:

- Highly versatile Lifting Point for handling of molds, dies, motors, gear boxes, and other machinery.
- Designed to replace Eye Bolts for enhanced safety and efficiency.
- Patented bail design prevents shock loading risk when side loaded.
- 360-degree rotation under load (fitted with ball bearings).
- 3 mounting options for easy and safe handling.
- High Viz Gunnebo GrabiQ color.

#### Optional:

Bolt conversion adapter - for use with oversized threads.

[... Read more](#)

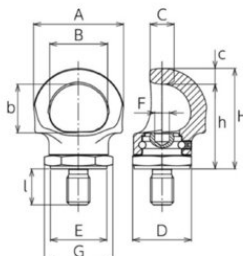
---

**Marking:** CE-marked, UKCA-marked

**Safety factor:** 4:1

## Lifting Point Gunnebo LPE

### Blueprint



### Technical data

Part code	Code	WLL ton	Thread mm	A mm	B mm	C mm	D mm	E mm	F mm	G mm	H mm	b mm	c mm	h mm	I mm	Weight kg
4215Z103408	LPE-M8x1.25 GrabiQ	0.3	M8	46	30	9	30	29	5	35	52	25	7	45	13	0.15
4215Z103410	LPE-M10x1.5 GrabiQ	0.5	M10	46	30	9	30	29	5	35	52	25	7	45	16	0.16
4215Z103412	LPE-M12x1.75 GrabiQ	0.75	M12	54	37	13	36	35	8	42	62	29	9	53	19	0.27
4215Z103416	LPE-M16x2 GrabiQ	1.5	M16	62	40	17	41	39	10	47	70	33	11	59	25	0.54
4215Z103420	LPE-M20x2.5 GrabiQ	2.3	M20	78	47	22	50	49	12	58	89	41	14	75	30	0.9
4215Z103424	LPE-M24x3 GrabiQ	3.2	M24	89	56	26	65	64	17	75	108	49	17	91	36	1.68
4215Z103430	LPE-M30x3.5 GrabiQ	4.5	M30	113	70	32	80	78	19	92	127	58	22	105	45	2.86