

Multi-Position Lifting Clamp KS

Product information



Suitable for lifting plates, beams, profiles and steel constructions from any position. The KS clamp has a safety spring and, depending on the weight of the load, will only leave a mark on one side.

Features:

- Horizontal and vertical use
- Manual release
- One-sided mark
- Hardness up to 300 HB

Multi-Position Lifting Clamp KS fulfill the Machinery Directive 2006/42/FC: [... Read more](#)

Material: Manufactured without load bearing welds

Marking: CE-marked

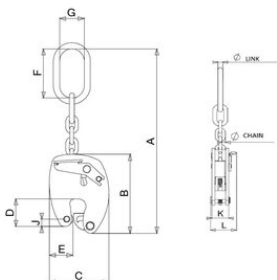
Temperature range: -20° up to +100°C

Finish: Hot epoxy coating

Warning: Never lift people with this equipment !

Multi-Position Lifting Clamp KS

Blueprint



Technical data

Part code	Code	WLL ton	Jaw width mm	Chain Ø mm	A mm	B mm	C mm	D mm	E mm	F mm	G mm	J mm	K mm	L mm	Weight kg
502100080151930	KS075 0-15	0.75	0-15	6	300	129	97	45	39	80	40	12	34	53	1.55
502100100201930	KS1 0-20	1	0-20	7	426	173	128	60	49	110	60	16	43	67	3.5
502100200251930	KS2 0-25	2	0-25	8	485	218	161	75	62	110	60	19	47	79	6.26
502100300301930	KS3 0-30	3	0-30	10	595	260	205	94	85	135	75	28	58	96	12.1