

## Automatic Lifting Clamp NX-NXR

### Product information



Lifting and tilting of smooth or polished pieces such as stainless steel plates, aluminum, pre-coated materials, wood, laminated materials, marble, concrete, glass, plastic. Clamps equipped with polyurethane-covered jaws allow lifting and tilting loads without marking their surface. These products feature a spring safety system and an automatic gripping mechanism, ensuring constant contact of the cam on the piece to be lifted, even when it is being set down, and ensuring the clamp closes when the sheet is positioned at the bottom of the throat. A handle facilitates gripping. The chain enables tilting and facilitates the placement of the clamp.

Automatic Lifting Clamp NX-NXR fulfill the Machinery Directive 2006/42/EC. [... Read more](#)

**Material:** Manufactured without load bearing welds

**Marking:** CE-marked

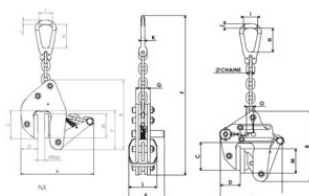
**Temperature range:** -20° up to +80°C

**Finish:** Hot epoxy coating

**Warning:** Never lift people with this equipment !

## Automatic Lifting Clamp NX-NXR

### Blueprint



### Technical data

Part code	Code	WLL ton	Jaw width mm	Chain Ø mm	A mm	B mm	C mm	D mm	E mm	F mm	G, mm	H, mm	I mm	J mm	K mm	L mm	M mm	O mm	P mm	Weight kg
502100050201910	NX05 0-20	0.5	0-20	7	171-221	208	82	50	105	376-460	42	71	41	13	11	80	70	X	118	4.5
502100051201910	NXR05 20-120	0.5	20-120	7	203-327	208	82	58	105	380-446	58	71	41	13	11	80	70	20	118	5.78
502100051001910	NXR05 0-100	0.5	0-100	7	178-308	208	82	58	105	379-466	58	71	41	13	11	80	70	20	118	6
502100051401910	NXR05 40-140	0.5	40-140	7	223-348	208	82	58	105	382-459	58	71	41	13	11	80	70	20	118	6
502100150301910	NX1.5 0-30	1.5	0-30	10	220-285	256	104	68	120	508-610	56	87	49	13	16	100	90	X	145	11