

Heavy Duty Swivel Eye-Eye, De Haan

Product information



Declaration of conformity, 3.1 Material certificate EN 10204.

Safety factor: 5:1

... [Read more](#)

Material: Alloy Steel Quenched and Tempered

Marking: According to standard

Temperature range: -20°C up to +180°C

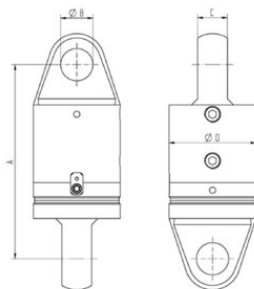
Finish: Painted

Standard: EN 10204

Safety factor: 5:1

Heavy Duty Swivel Eye-Eye, De Haan

Blueprint



Technical data

| Part code | WLL ton | A mm | Ø B mm | C mm | Ø D mm | Weight kg |
|--------------|---------|------|--------|------|--------|-----------|
| 422500950460 | 9.5 | 268 | 36 | 32 | 125 | 19 |
| 422501350460 | 13.5 | 313 | 44 | 42 | 130 | 23 |
| 422501700460 | 17 | 313 | 52 | 48 | 140 | 28 |
| 422502500460 | 25 | 325 | 54 | 55 | 150 | 32 |
| 422503500460 | 35 | 378 | 60 | 70 | 170 | 52 |
| 422505500460 | 55 | 478 | 74 | 78 | 200 | 89 |
| 422508500460 | 85 | 538 | 88 | 98 | 230 | 140 |
| 422512000460 | 120 | 658 | 100 | 120 | 280 | 249 |
| 422515000460 | 150 | 728 | 114 | 126 | 300 | 321 |