

## Quick Release Link for Pear Socket Nemag

---

### Product information



The Nemag Quick Release Link has been balanced and perfected to become the most reliable, quickest and safest coupling method for ropes and chains. The contact surface of the C-section has been hardened, which considerably lengthens the life span. The construction of the locking piece ensures reliable functioning; even under severe circumstances. The locking pieces are interchangeable.

**Optional:** Nemag also supplies a key especially designed for the Quick Release Link. This key has a hexagonal head that fits into the keyhole of the locking piece. The horizontal handle provides sufficient grip to be able to open or close any locking piece with one short movement. The sharp end of the handle can be used to remove dirt on the outside (of the keyhole).

... [Read more](#)

---

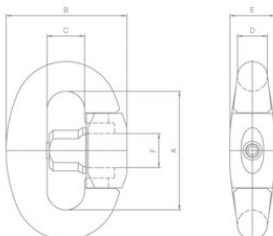
**Marking:** According to standard, CE-marked

**Standard:** EN 1677-1

**Warning:** The working load is the recommended maximum load for grabbing operations when Quick Release Links and Rope Pear Sockets are passing over a special cable sheave. For other applications a safety factor in line with official international and national guidelines has to be adhered to.

## Quick Release Link for Pear Socket Nemag

### Blueprint



### Technical data

Part code	Code	WLL	MBL	A mm	B mm	C mm	D mm	E mm	F mm	Weight kg
122300300020	RL-4	3	25	76	76	24.5	19	30	21	0.9
122300450020	RL-5	4.5	33	84	84	27	21	32.5	23	1.2
122300500020	RL-6	5	37.5	92	92	29.5	23	35	25	1.5
122300700020	RL-7	7	49	100	100	32	25	38	28	2
122300800020	RL-8	8	54	108	108	34.5	27	40.5	31	2.5
122300950020	RL-9	9.5	60	116	116	37	29	43.5	34	3.1
122301200020	RL-10	12	75	128	128	40.5	32	48	37	4.4
122301500020	RL-11	15	95	140	140	44	35	53	40	5.7
122301700020	RL-12	17	110	152	152	47.5	38	57	43	7.2
122302100020	RL-13	21	135	164	164	51	41	61.5	46	8.7
122302600020	RL-14	26	160	176	173	54	44	66	50	11
122303000020	RL-15	30	175	188	188	58	47	70.5	52	13.5
122304250020	RL-17	42.5	260	222	222	68	56	84	62	23