

Rotating Eye Bolt Stainless steel C6X807

Product information



Stainless steel rotating eyebolt does not swivel under load.
A hexagon head screw can be used as a clamping device.

... [Read more](#)

Material: Duplex steel

Marking: CE-marked, WLL, Supplier, Origin, Code article, Traceability number.

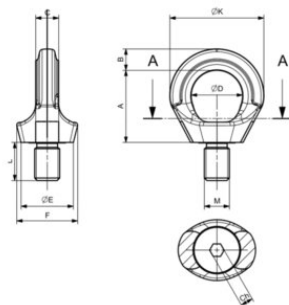
Finish: Pickled

Safety factor: 4:1

Grade: 6

Rotating Eye Bolt Stainless steel C6X807

Blueprint



Technical data

Part code	WLL ton	Thread mm	A mm	B mm	C mm	D mm	E mm	F mm	K mm	L mm	CH mm mm	Weight kg
421100050650	0.5	M12	43	12.5	11.5	30	30	36.5	55.5	18	8	0.2
421100100650	1	M16	49.5	14.5	15.7	35	35	41.8	64.5	24	10	0.35
421100200650	2	M20	58	16	18	40	42	51.5	74.5	30	12	0.6
421100250650	2.5	M24	69	20.5	22	49	50	58	90	36	12	1