

Lifting Eye Bolt DIN 580 Stainless steel

Product information

Stainless steel lifting eye.

Different angles of inclination.

... [Read more](#)



Material: AISI 316

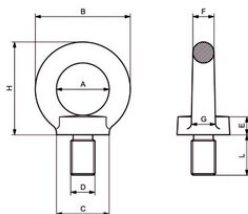
Marking: CE-marked, WLL, material, supplier name, lifting angle, tracking lot number

Finish: Polish

Safety factor: 6:1

Lifting Eye Bolt DIN 580 Stainless steel

Blueprint



Technical data

Part code	WLL ton	Thread mm	WLL 90° ton	WLL 0-45° ton	A mm	B mm	C mm	E mm	F mm	G, mm	H, mm	L mm	D mm	Weight kg
421100010372	0.09	M6	0.045	0.06	20	36	20	6	8	10	36	13	M6	0.05
421100140370	0.14	M8	0.07	0.1	20	36	20	6	8	10	36	13	M8	0.06
421100230370	0.23	M10	0.115	0.17	25	45	25	8	10	12	45	17	M10	0.12
421100340370	0.34	M12	0.17	0.24	30	54	30	10	12	14	53	20.5	M12	0.18
421100050370	0.49	M14	0.245	0.35	35	63	35	12	14	16	62	27	M14	0.19
421100070370	0.7	M16	0.35	0.5	35	63	35	12	14	16	62	27	M16	0.31
421100930370	0.93	M18	0.465	0.65	40	72	40	14	16	19	71	30	M18	0.4
421100120370	1.2	M20	0.6	0.86	40	72	40	14	16	19	71	30	M20	0.44
421100180370	1.8	M24	0.9	1.29	50	90	50	18	20	24	90	36	M24	0.94
421100320370	3.2	M30	1.6	2.3	60	108	65	22	24	28	109	45	M30	1.8