

Fast Connector Socket FCS

Product information



Forged clevis fittings with Pin and cutterpin for fast connection of steel wire rope. Connector shall be used with non-rotating or cat 1. rotation resistant wire rope only. The connector has to be moulded / casted on the steel wire rope with wirelock resin.

... [Read more](#)

Features: Designed for use with mobile cranes.

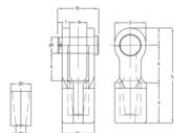
Material: Quenched and tempered cast steel.

Finish: Blue painted (P) or hot dip galvanized (G).

Warning: Compare the spelter's and the wire rope's minimum breaking load.

Fast Connector Socket FCS

Blueprint



Technical data

| Part code | Code | Rope Ø range mm | MBL ton | Finish | A mm | B mm | C mm | Ø H mm | Ø P mm | T mm | W mm | D, mm | Ø D mm | Ø J mm | K mm | TB mm | TL mm | Weight kg |
|--------------|-----------|-----------------|---------|---------|------|------|------|--------|--------|------|------|-------|--------|--------|------|-------|-------|-----------|
| 122101300165 | FCS 701 P | 11-13 | 20 | Painted | 62 | 61 | 27 | 15 | 25 | 12 | 25 | 50 | 33 | 49 | 46 | 67 | 150 | 1.6 |
| 122101600165 | FCS 702 P | 13-16 | 25 | Painted | 72 | 78 | 32 | 18 | 30 | 14 | 32 | 58 | 38 | 60 | 59 | 85 | 182 | 2.6 |
| 122101900165 | FCS 703 P | 16-19 | 40 | Painted | 85 | 93 | 40 | 21 | 35 | 16 | 38 | 70 | 45 | 70 | 69 | 95 | 218 | 4.5 |
| 122102200165 | FCS 704 P | 20-22 | 55 | Painted | 102 | 106 | 45 | 24 | 41 | 19 | 44 | 80 | 50 | 82 | 81 | 110 | 253 | 6.5 |
| 122102600165 | FCS 705 P | 23-26 | 75 | Painted | 115 | 123 | 60 | 28 | 51 | 22 | 51 | 104 | 60 | 95 | 90 | 128 | 298 | 11 |
| 122102900165 | FCS 706 P | 27-29 | 90 | Painted | 140 | 152 | 65 | 32 | 57 | 25 | 57 | 114 | 70 | 107 | 116 | 142 | 357 | 16 |