

Cast steel Sheave with Cylindrical Roller Bearing

Product information



Self-lubricating cast sheaves are often applied in lifting, luffing and wire rope routing with intensive operating cycles. The groove opening angle was carefully designed to reduce potential twist resulting from fleet angles. In combination with the self-lubricating effect, the wire rope in your system will last longer. The latter was proved in recent research, in which several sheave materials were compared in terms of their effect on rope twist.

- Different shaft sizes possible.
- Groove may be adjusted to other wire rope diameters.

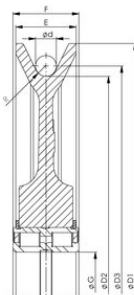
... [Read more](#)

Material: Cast steel

Note: Custom made sheaves possible on request.

Cast steel Sheave with Cylindrical Roller Bearing

Blueprint



Technical data

Part code	Rope Ø range mm	Shaft Ø mm	Groove radius	Sheave dia. mm	Bearing	d mm	E mm	F mm	R mm	D1 mm	D2 mm	D3 mm	Ø G mm mm	Weight kg
1401SE2505008B55	10	40	5.5	290 / 250	SL04 5008PP	10	32	38	5.5	290	250	260	40	5.9
1401SE2505008B6	11	40	6	290 / 250	SL04 5008PP	11	32	38	6	290	250	261	40	5.8
1401SE2505008B72	13	40	7.2	290 / 250	SL04 5008PP	13	32	38	7.2	290	250	263	40	6.2
1401SE28050107	13	50	7	320 / 280	SL04 5010PP	13	36	40	7	320	280	293	50	8.1
1401SE28050127	13	60	7	320 / 280	SL04 5012PP	13	42	46	7	320	280	293	60	9.4
1401SE260501275	14	60	7.5	300 / 260	SL04 5012PP	14	42	46	7.5	300	260	274	60	9.6
1401SE28050128	15	60	8	320 / 280	SL04 5012PP	15	42	46	8	320	280	295	60	9.2
1401SE2955008B85	16	40	8.5	330 / 295	SL04 5008PP	16	32	38	8.5	330	295	311	40	8.8
1401SE280501285	16	60	8.5	320 / 280	SL04 5012PP	16	42	46	8.5	320	280	296	60	9.1
1401SE260501285	16	60	8.5	300 / 260	SL04 5012PP	16	42	46	8.5	300	260	276	60	9.1
1401SE320501385	16	65	8.5	365 / 320	SL04 5013PP	16	42	46	8.5	365	320	336	65	13.5
1401SE355501385	16	65	8.5	410 / 355	SL04 5013PP	16	42	46	8.5	410	355	371	65	18.3
1401SE360501685	16	80	8.5	420 / 360	SL04 5016PP	16	55	60	8.5	420	360	376	80	21.9
1401SE400501385	16	65	8.5	460 / 400	SL04 5013PP	16	43	46	8.5	460	400	416	65	25
1401SE35550139	17	65	9	410 / 355	SL04 5013PP	17	42	46	9	410	355	372	65	18.1
1401SE3455010B95	18	50	9.5	385 / 345	SL04 5010PP	18	36	40	9.5	385	345	363	50	12.5
1401SE354501395	18	65	9.5	400 / 354	SL04 5013PP	18	42	46	9.5	400	354	372	65	16.5
1401SE355501395	18	65	9.5	410 / 355	SL04 5013PP	18	42	46	9.5	410	355	373	65	18
1401SE360501695	18	80	9.5	420 / 360	SL04 5016PP	18	55	60	9.5	420	360	378	80	21.6
1401SE400501395	18	65	9.5	460 / 400	SL04 5013PP	18	43	46	9.5	460	400	418	65	25
1401SE4005014B95	18	70	9.5	460 / 400	SL04 5014PP	18	49	54	9.5	460	400	418	70	25.4
1401SE280501210	19	60	10	320 / 280	SL04 5012PP	19	42	46	10	320	280	299	60	10.3

Cast steel Sheave with Cylindrical Roller Bearing

Technical data

Part code	Rope Ø range mm	Shaft Ø mm	Groove radius	Sheave dia. mm	Bearing	d mm	E mm	F mm	R mm	D1 mm	D2 mm	D3 mm	Ø G mm	mm	Weight kg
1401SE3455010B10	19	50	10	385 / 345	SL04 5010PP	19	36	40	10	385	345	364	50		12.5
1401SE320501310	19	65	10	365 / 320	SL04 5013PP	19	42	46	10	365	320	339	65		13.2
1401SE355501610	19	80	10	410 / 355	SL04 5016PP	19	55	60	10	410	355	374	80		16.8
1401SE355501310	19	65	10	410 / 355	SL04 5013PP	19	42	46	10	410	355	374	65		17.8
1401SE360501610	19	80	10	420 / 360	SL04 5016PP	19	55	60	10	420	360	379	80		17.9
1401SE400501310	19	65	10	460 / 400	SL04 5013PP	19	43	46	10	460	400	419	65		24.8
1401SE400501610	19	80	10	460 / 400	SL04 5016PP	19	55	60	10	460	400	419	80		28.8
1401SE400501810	19	90	10	460 / 400	SL04 5018PP	19	62	67	10	460	400	419	90		31
1401SE450501810	19	90	10	515 / 450	SL04 5018PP	19	62	67	10	515	450	469	90		41.4
1401SE45016010	19	160	10	515 / 450	SL04 160PP	19	75	80	10	515	450	469	160		45.4
1401SE450502410	19	120	10	515 / 450	SL04 5024PP	19	75	80	10	515	450	469	120		47.9
1401SE4005014B115	21	70	11.5	460 / 400	SL04 5014PP	21	49	54	11.5	460	400	421	70		24.7
1401SE4005016115	21	80	11.5	460 / 400	SL04 5016PP	21	55	60	11.5	460	400	421	80		28.3
1401SE4005018115	21	90	11.5	460 / 400	SL04 5018PP	21	62	67	11.5	460	400	421	90		30.4
1401SE4825018115	21	90	11.5	560 / 482	SL04 5018PP	21	62	67	11.5	560	482	503	90		45.5
1401SE355501612	22	80	12	410 / 355	SL04 5016PP	22	55	60	12	410	355	377	80		16.8
1401SE400501612	22	80	12	460 / 400	SL04 5016PP	22	55	60	12	460	400	422	80		28.1
1401SE400501812	22	90	12	460 / 400	SL04 5018PP	22	62	67	12	460	400	422	90		30.2
1401SE450501812	22	90	12	515 / 450	SL04 5018PP	22	62	67	12	515	450	472	90		40.5
1401SE450502412	22	120	12	515 / 450	SL04 5024PP	22	75	80	12	515	450	472	120		47
1401SE528501813	24	90	13	595 / 528	SL04 5018PP	24	61	67	13	595	528	552	90		50.9
1401SE52820013	24	200	13	595 / 528	SL04 200PP	24	74	80	13	595	528	552	200		56.7
1401SE52816013	24	160	13	595 / 528	SL04 160PP	24	74	80	13	595	528	552	160		61.2
1401SE4505018135	25	90	13.5	515 / 450	SL04 5018PP	25	62	67	13.5	515	450	475	90		39.8
1401SE4505024135	25	120	13.5	515 / 450	SL04 5024PP	25	75	80	13.5	515	450	475	120		46.3
1401SE5005018B135	25	90	13.5	570 / 500	SL04 5018PP	25	61	67	13.5	570	500	526	90		46.8
1401SE5285018135	25	90	13.5	595 / 528	SL04 5018PP	25	61	67	13.5	595	528	553	90		50.6
1401SE528160135	25	160	13.5	595 / 528	SL04 160PP	25	74	80	13.5	595	528	553	160		53.5
1401SE5285024135	25	120	13.5	595 / 528	SL04 5024PP	25	74	80	13.5	595	528	553	120		57.8
1401SE6705024135	25	120	13.5	760 / 670	SL04 5024PP	25	74	80	13.5	760	670	695	120		92.6
1401SE670200135	25	200	13.5	760 / 670	SL04 200PP	25	74	80	13.5	760	670	695	200		93.5

Cast steel Sheave with Cylindrical Roller Bearing

Technical data

Part code	Rope Ø range mm	Shaft Ø mm	Groove radius	Sheave dia. mm	Bearing	d mm	E mm	F mm	R mm	D1 mm	D2 mm	D3 mm	Ø G mm	mm	Weight kg
1401SE670160135	25	160	13.5	760 / 670	SL04 160PP	25	74	80	13.5	760	670	695	160		93.5
1401SE528501814	26	90	14	595 / 528	SL04 5018PP	26	61	67	14	595	528	554	90		45.4
1401SE52816014	26	160	14	595 / 528	SL04 160PP	26	74	80	14	595	528	554	160		53.2
1401SE528502414	26	120	14	595 / 528	SL04 5024PP	26	74	80	14	595	528	554	120		63.5
1401SE57516014	26	160	14	650 / 575	SL04 160PP	26	74	80	14	650	575	601	160		72
1401SE575502414	26	120	14	650 / 575	SL04 5024PP	26	74	80	14	650	575	601	120		72.6
1401SE575502214	26	110	14	650 / 575	SL04 5022PP	26	74	80	14	650	575	601	110		73.5
1401SE57520014	26	200	14	650 / 575	SL04 200PP	26	74	80	14	650	575	601	200		76.7
1401SE450501815	28	90	15	515 / 450	SL04 5018PP	28	62	67	15	515	450	478	90		39.2
1401SE450502415	28	120	15	515 / 450	SL04 5024PP	28	75	80	15	515	450	478	120		45.6
1401SE528501815	28	90	15	595 / 528	SL04 5018PP	28	61	67	15	595	528	556	90		49.9
1401SE52816015	28	160	15	595 / 528	SL04 160PP	28	72	80	15	595	528	556	160		52.7
1401SE528502415	28	120	15	595 / 528	SL04 5024PP	28	74	80	15	595	528	556	120		57
1401SE52820015	28	200	15	595 / 528	SL04 200PP	28	74	80	15	595	528	556	200		64.9
1401SE57516015	28	160	15	650 / 575	SL04 160PP	28	74	80	15	650	575	603	160		71.4
1401SE575502415	28	120	15	650 / 575	SL04 5024PP	28	74	80	15	650	575	603	120		72
1401SE57520015	28	200	15	650 / 575	SL04 200PP	28	74	80	15	650	575	603	200		76.1
1401SE63016015	28	160	15	710 / 630	SL04 160PP	28	74	80	15	710	630	658	160		82.8
1401SE630502415	28	120	15	710 / 630	SL04 5024PP	28	74	80	15	710	630	658	120		84.4
1401SE63020015	28	200	15	710 / 630	SL04 200PP	28	74	80	15	710	630	658	200		87.7
1401SE670502415	28	120	15	760 / 670	SL04 5024PP	28	74	80	15	760	670	698	120		91.3
1401SE67016015	28	160	15	760 / 670	SL04 160PP	28	74	80	15	760	670	698	160		92.2
1401SE67020015	28	200	15	760 / 670	SL04 200PP	28	74	80	15	760	670	698	200		97
1401SE575502216	30	110	16	650 / 575	SL04 5022PP	30	74	80	16	650	575	605	110		72.3
1401SE63016016	30	160	16	710 / 630	SL04 160PP	30	74	80	16	710	630	660	160		82.1
1401SE6305022B16	30	110	16	710 / 630	SL04 5022PP	30	74	80	16	710	630	660	110		83.5
1401SE630502416	30	120	16	710 / 630	SL04 5024PP	30	74	80	16	710	630	660	120		83.7
1401SE63020016	30	200	16	710 / 630	SL04 200PP	30	74	80	16	710	630	660	200		87
1401SE8005022165	31	110	16.5	890 / 800	SL04 5022PP	31	70	80	16.5	890	800	831	110		136.5
1401SE575502417	32	120	17	650 / 575	SL04 5024PP	32	74	80	17	650	575	607	120		70.9
1401SE63016017	32	160	17	710 / 630	SL04 160PP	32	74	80	17	710	630	662	160		81.4

Cast steel Sheave with Cylindrical Roller Bearing

Technical data

Part code	Rope Ø range mm	Shaft Ø mm	Groove radius	Sheave dia. mm	Bearing	d mm	E mm	F mm	R mm	D1 mm	D2 mm	D3 mm	Ø G mm	Weight kg
1401SE630502417	32	120	17	710 / 630	SL04 5024PP	32	74	80	17	710	630	662	120	83
1401SE63020017	32	200	17	710 / 630	SL04 200PP	32	74	80	17	710	630	662	200	86.3
1401SE670502417	32	120	17	760 / 670	SL04 5024PP	32	74	80	17	760	670	702	120	89.7
1401SE67016017	32	160	17	760 / 670	SL04 160PP	32	74	80	17	760	670	702	160	90.5
1401SE67020017	32	200	17	760 / 670	SL04 200PP	32	74	80	17	760	670	702	200	95.3
1401SE710502217	32	110	17	800 / 710	SL04 5022PP	32	72	80	17	800	710	742	110	99.8
1401SE800502617	32	130	17	890 / 800	SL04 5026PP	32	75	95	17	890	800	832	130	129.9
1401SE710502618	34	130	18	800 / 710	SL04 5026PP	34	78	95	18	800	710	744	130	98.3
1401SE710502218	34	110	18	800 / 710	SL04 5022PP	34	72	80	18	800	710	744	110	98.7
1401SE800502819	36	140	18	890 / 800	SL04 5028PP	36	85	95	18	890	800	836	140	152.4
1401SE710502420	38	120	20	800 / 710	SL04 5024PP	38	72	80	20	800	710	748	120	94.5
1401SE800502420	38	120	18	890 / 800	SL04 5024PP	38	70	80	18	890	800	838	120	127.1
1401SE800502620	38	130	18	890 / 800	SL04 5026PP	38	75	95	18	890	800	838	130	133.5
1401SE760503020	38	150	18	860 / 760	SL04 5030PP	38	85	100	18	860	760	798	150	134.2
1401SE800502820	38	140	18	890 / 800	SL04 5028PP	38	85	95	18	890	800	838	140	151.4
1401SE800503020	38	150	18	890 / 800	SL04 5030PP	38	90	100	18	890	800	838	150	153
1401SE7605026205	39	130	20.5	860 / 760	SL04 5026PP	39	75	95	20.5	860	760	799	130	138.2
1401SE800502821	40	140	21	890 / 800	SL04 5028PP	40	85	95	21	890	800	840	140	150.4
1401SE800503021	40	150	21	890 / 800	SL04 5030PP	40	90	100	21	890	800	840	150	152.4
1401SE8005028225	42	140	22.5	890 / 800	SL04 5028PP	42	85	95	22.5	890	800	842	140	149
1401SE8005030225	42	150	22.5	890 / 800	SL04 5030PP	42	90	100	22.5	890	800	842	150	160.1
1401SE8005030235	44	150	23.5	890 / 800	SL04 5030PP	44	90	100	23.5	890	800	844	150	149.6