

## Sheave with Bronze Bushing, Rigging

---

### Product information



Self-lubricating cast sheaves are often applied in lifting, luffing and wire rope routing with intensive operating cycles. The groove opening angle was carefully designed to reduce potential twist resulting from fleet angles. In combination with the self-lubricating effect, the wire rope in your system will last longer. The latter was proved in recent research, in which several sheave materials were compared in terms of their effect on rope twist.

- Different shaft sizes possible.
- Groove may be adjusted to other wire rope diameters.

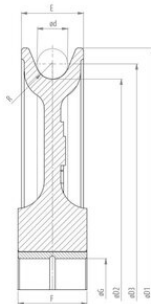
[... Read more](#)

---

**Material:** Cast steel GGG-60, GGG-70, GS20Mn5 or GS30Mn5 depending on model

# Sheave with Bronze Bushing, Rigging

Blueprint



## Sheave with Bronze Bushing, Rigging

### Technical data

Part code	Rope Ø range mm	Bearing	Shaft Ø mm	Groove radius	Sheave dia. mm	Ø D1 mm	Ø D2 mm	ØD3 mm	ØG mm	E mm	F mm	R mm	Ø d mm	Weight kg
140100800221	8	Bronze bearing	15	4.5	100 / 80	100	80	88	15	18	20	4.5	8	0.6
140101000221	10	Bronze bearing	22	5.5	125 / 105	125	105	115	22	23	27	5.5	10	1.5
140101200221	12	Bronze bearing	30	6.5	150 / 120	150	120	132	30	36	40	6.5	12	3
140101200222	12	Bronze bearing	50	12	350 / 305	350	305	327	50	45	50	12	22	13.9
140101400221	14	Bronze bearing	30	7.5	250 / 165	200	165	179	30	36	40	7.5	14	4.5
140101600221	16	Bronze bearing	50	8.5	300 / 250	300	250	266	50	45	60	8.5	16	13.9
140101800221	18	Bronze bearing	35	9.5	250 / 210	250	210	228	35	40	45	9.5	18	8
140102000221	20	Bronze bearing	40	11	300 / 255	300	255	275	40	45	50	11	20	12
140102200222	22	Bronze bearing	60	12	250 / 195	250	195	217	60	50	50	12	22	12
140102200221	22	Bronze bearing	45	12	350 / 305	350	305	327	45	45	50	12	22	17
140102400222	24	Bronze bearing	70	13	300 / 250	300	250	274	70	55	60	13	24	15
140102400224	24	Bronze bearing	60	13	400 / 345	400	345	369	60	55	60	13	24	22.8
140102400222	24	Bronze bearing	50	13	400 / 345	400	345	369	50	55	65	13	24	23.6
140102400221	24	Bronze bearing	50	13	400 / 345	400	345	369	50	55	60	13	24	24
140102600221	26	Bronze bearing	70	14	350 / 305	350	305	331	70	70	75	14	26	20
140102800223	28	Bronze bearing	80	15	300 / 240	300	240	268	80	58	62	15	28	11.9
140102800224	28	Bronze bearing	80	15	365 / 300	365	300	328	80	58	62	15	28	15.7
140103200222	32	Bronze bearing	80	17	365 / 300	365	300	332	80	58	62	17	32	15.1