

## Lifting eye - High resistant

---

### Product information



Compared to DIN 580 carbon steel eye bolts, Grade 80 lifting eyes offer a higher capacity for equivalent thread.

Only vertical lifting is recommended. We recommend the use of swivel rings in case of angle.

The minimum tapping depth is the length of the rod plus half of its diameter.

Machinery directive 2006/42/CE

... [Read more](#)

---

**Material:** Alloy, forged, tempered and tempered steel

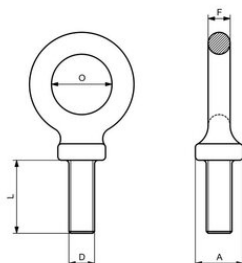
**Marking:** CE-marked

**Finish:** Red epoxy coating

**Safety factor:** 5:1

## Lifting eye - High resistant

### Blueprint



### Technical data

Part code	Diameter mm	WLL ton	D mm	L mm	Omm mm	A mm	F mm	Weight kg
421100040420	8	0.4	8	24	19.5	20	8	0.06
421100070420	10	0.7	10	28	23	21	10	0.08
421100100420	12	1	12	40	29	22	12	0.14
421100120420	14	1.2	14	40	31.5	26	14	0.2
421100150420	16	1.5	16	51	36	28	14	0.3
421100200420	18	2	18	53	41.5	31	16	0.42
421100250420	20	2.5	20	56	45.5	32	16	0.5
421100300420	22	3	22	62	50	35	17	0.64
421100400420	24	4	24	67	53	38	20.5	0.92
421100500420	27	5	27	74	59	40	21	1.16
421100600420	30	6	30	79	60	45.5	24.5	1.66