

## Wireless Loadshackle

---

### Product information



Wireless loadshackle with low headroom and a load-centering bobbin.

**Battery type/life:** Loadcell 4 x AA Alkaline/Load cell 1200 hours continuous.

**Accuracy:**  $\pm 1\%$  of applied load.

**Frequency:** 2.4 GHz.

**System range:** 700 m.

**Data rate:** 3 updates per second.

**Protection:** IP67.

... [Read more](#)

---

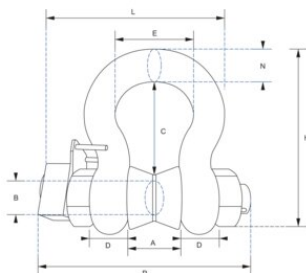
**Temperature range:**  $-10^{\circ}\text{C}$  up to  $+50^{\circ}\text{C}$ .

**Note:** Safety factor when used with a load bobbin.

**Safety factor:** 5:1

## Wireless Loadshackle

### Blueprint



### Technical data

Part code	Code	WLL ton	Resolution kg	A mm	ØB mm	C mm	D, mm	E mm	H, mm	L mm	Nmm mm	Pmm mm	Weight kg
423500330160	WLS3,25T	3.25	5	26.9	19.1	56.9	16	42.9	106	127.1	17.5	143	2.8
423500650160	WLS6,5T	6.5	5	36.6	25.4	79.7	22.4	58	148	156.5	24.6	173	3.2
423501200160	WLS12T	12	10	51.5	35.1	113	31.8	82.5	210	196	35.1	218	8
423502500160	WLS25T	25	20	73	51	170	44.5	127	313	281	57	293	18
423505500160	WLS55T	55	50	82.5	57	189.5	51	164	348	306	61	317	25